



Long Cane Raspberry A potential new crop?

SE Fruit and Vegetable Conference

Jan 4, 2022

Savannah, GA

Gina_Fernandez@ncsu.edu



Today's talks

- Introduction and background
- Nursery Long cane production
- Fertility needs and challenges
- Trends based on pull out date and cultivars
- Long cane blackberry production:AR updates



What is a long cane?

- Long canes are:
 - year old,
 - ready to fruitraspberry or blackberry canes,
 - that are grown in pots,
 - and will produce a crop in the first season



Photo: Lisa Rayburn



Why?

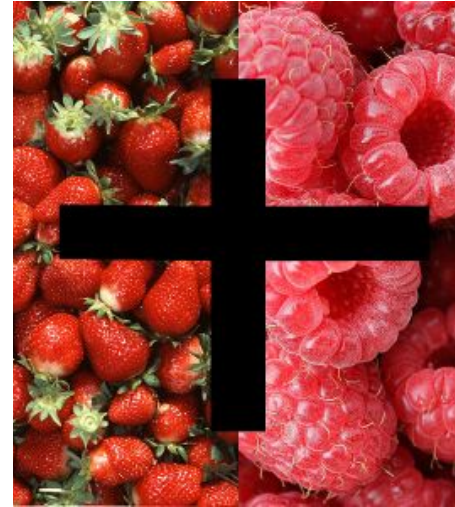
- Produce where it is not done at this time
- Produce in off season
- High value crop
- Can be done





Why?

- Produce raspberry fruit at the same time as strawberries in SE regions of NC and beyond?
- Increase fruit offerings in early spring
- Produce all 4 berries on one farm!







Long cane production

- Plants are produced in cooler climate for optimal growth (flowers and canes)
- Plants are cooled to fulfill chilling requirements
- Plants are placed in high tunnels to promote early bud break
- Fruit is harvested



Top photos: TriHistl



A little background info...

“New Crops” Grown in Soilless Systems

- Caneberries are among several other traditionally field-grown crops to move toward soilless cultivation.
- Existing production knowledge from outdoor (woody) ornamental nursery industry can be very important.
- Substrate Selection based on:
 - Crop Type
 - Crop Longevity
 - Container type, size, and volume
 - Irrigation delivery method(s)
- **Increasing advantage to regionally sourced substrate products.**





Soft Fruit in Soilless Systems

- Blueberries, Blackberries and Raspberries
 - Optimal substrates have not been fully identified



True blue Blueberry Grow Bags



- A proprietary blend of coir pith, chips, and fiber designed to maximize blueberry yield.
- Excellent Drainage.
- High Oxygen Content Neutral pH (5.5 to 6.5) Low EC <.8.
- Fosters root growth for best yield with multiple watering/fertilizing schedules.

Variety	Compressed Weight	Expanded Dimensions	Yield	Pallet Load	Container Load	EC	PH
Standard	7.5lb 3.35kg	12x12x12m 30x30x30cm	7gal 27liters	350	7000 bags	<.8	5.5-6.5
Low Salt	7.5lb 3.35kg	12x12x12m 30x30x30cm	7gal 27liters	350	7000 bags	<.6	5.5-6.5
Buffered	7.5lb 3.35kg	12x12x12m 30x30x30cm	7gal 27liters	350	7000 bags	<.2	5.5-6.5

True Blue is an organic product made from 100% coconut. EC levels and PH levels are not guaranteed and will fluctuate. First year blueberry yield generally range from 1-3kg per plant. This can fluctuate based on blueberry type and growers processes and is not guaranteed.





Types of Substrates - Organic

- Peat Moss

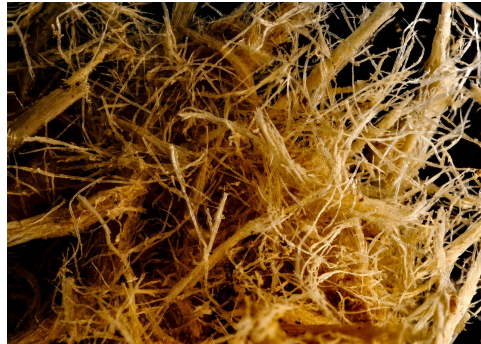
- **Coco Coir**

- **Bark**

- Wood Fiber

- Rice Hulls

- Compost





Future of Long cane production?

- Feasible for your farm? First we need to know:
 - Planting (pull out) date?
 - Floral bud development in nursery
 - Management of high tunnel
 - Cultivar performance
 - Substrate
 - Fertility
 - Economics
 - Markets
 - Niche markets, bring customers in early



NC Long Cane Team

- Lewis Farm
 - Cal Lewis
 - Josh Mays
 - Jimmy Hewitt
- NCSU
 - Gina Fernandez
 - Lisa Rayburn
 - Brian Jackson
 - Daniel Treggeagle
 - Marcia Gumpertz
- NCDA&CS
 - Kristin Hicks

