

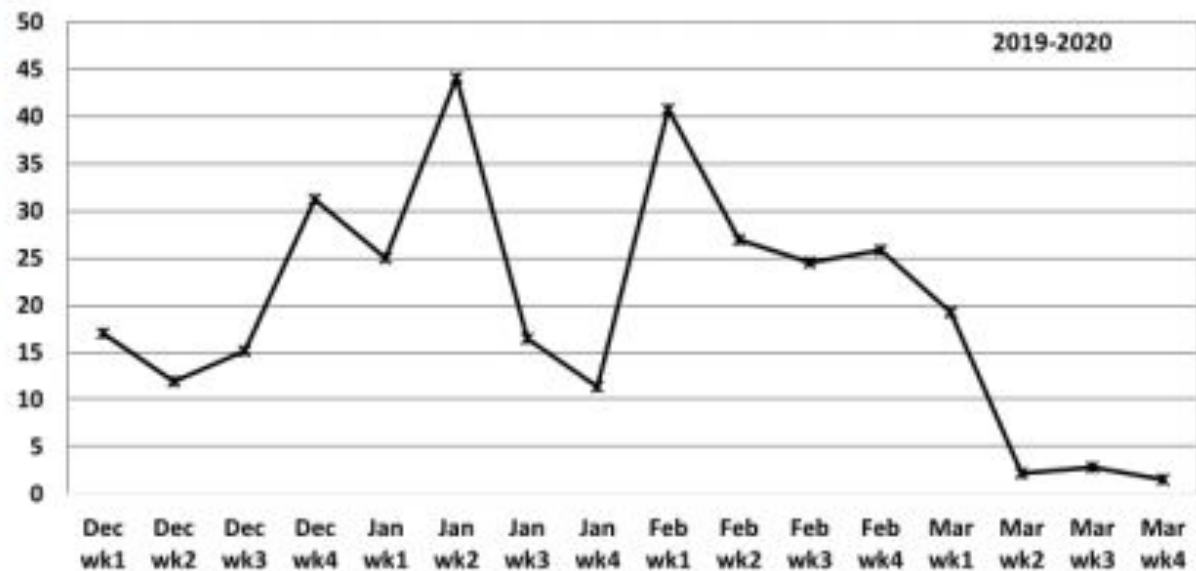
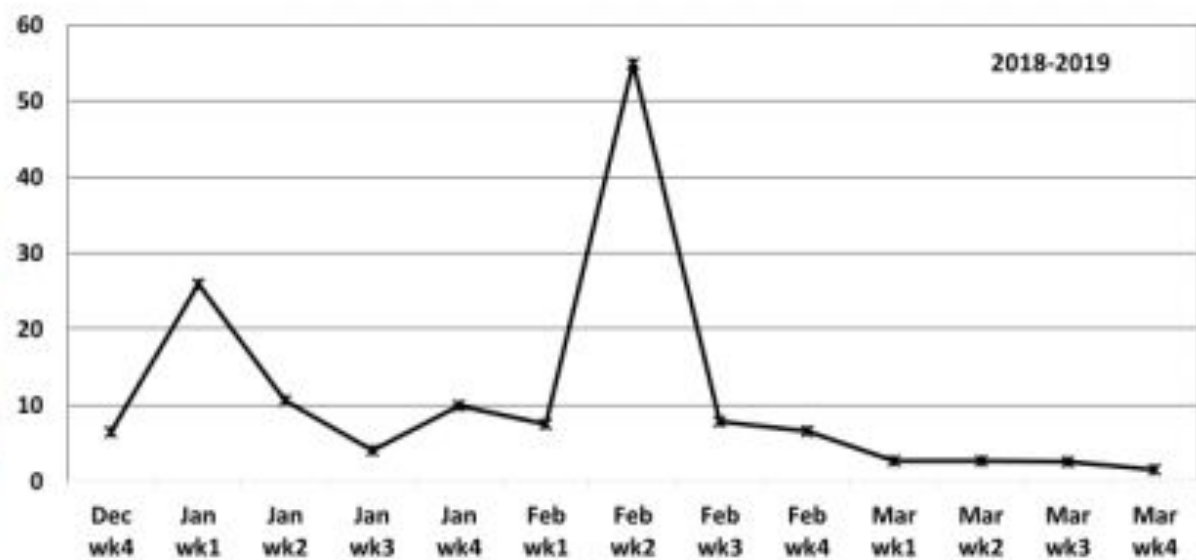
Update on Broad Mites and Pepper Weevil in Peppers

**Alton N. Sparks, Jr., Extension Entomologist
David G. Riley, Vegetable Entomology Research
Ty Torrance, Multi-County Vegetable Agent
The University of Georgia, Tifton Campus**

Pepper weevil trapping, 2018-2022

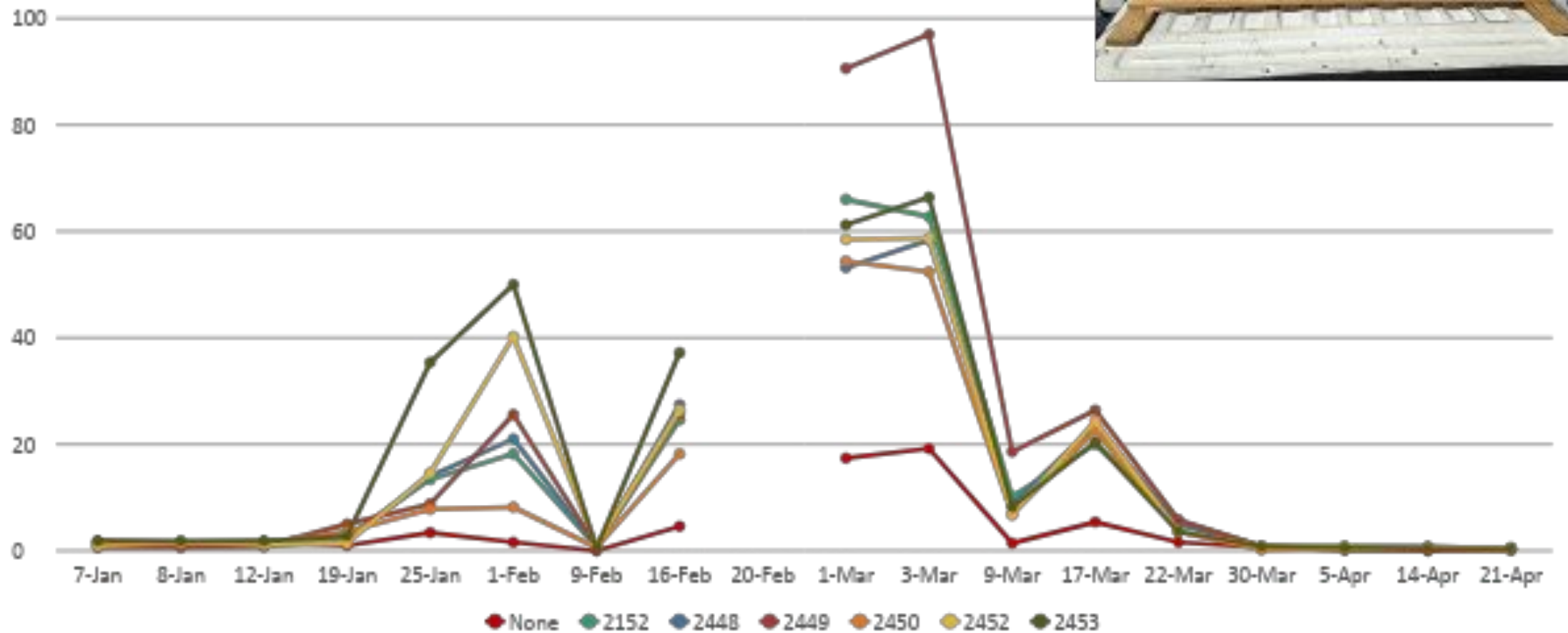
- Ty Torrance: Grady, Tift, Colquitt, Worth Counties
 - Justin Shealey: Echols County
 - Stephanie Hollifield, Michasia Dowdy: Brooks County
 - Cale Cloud: Grady County
 - Will Gay, Jeremy Kickler: Colquitt County
 - Justin Hand: Tift County
-
- Georgia Commodity Commission for Vegetables
 - Trece Corporation

Adult weevils per trap per week

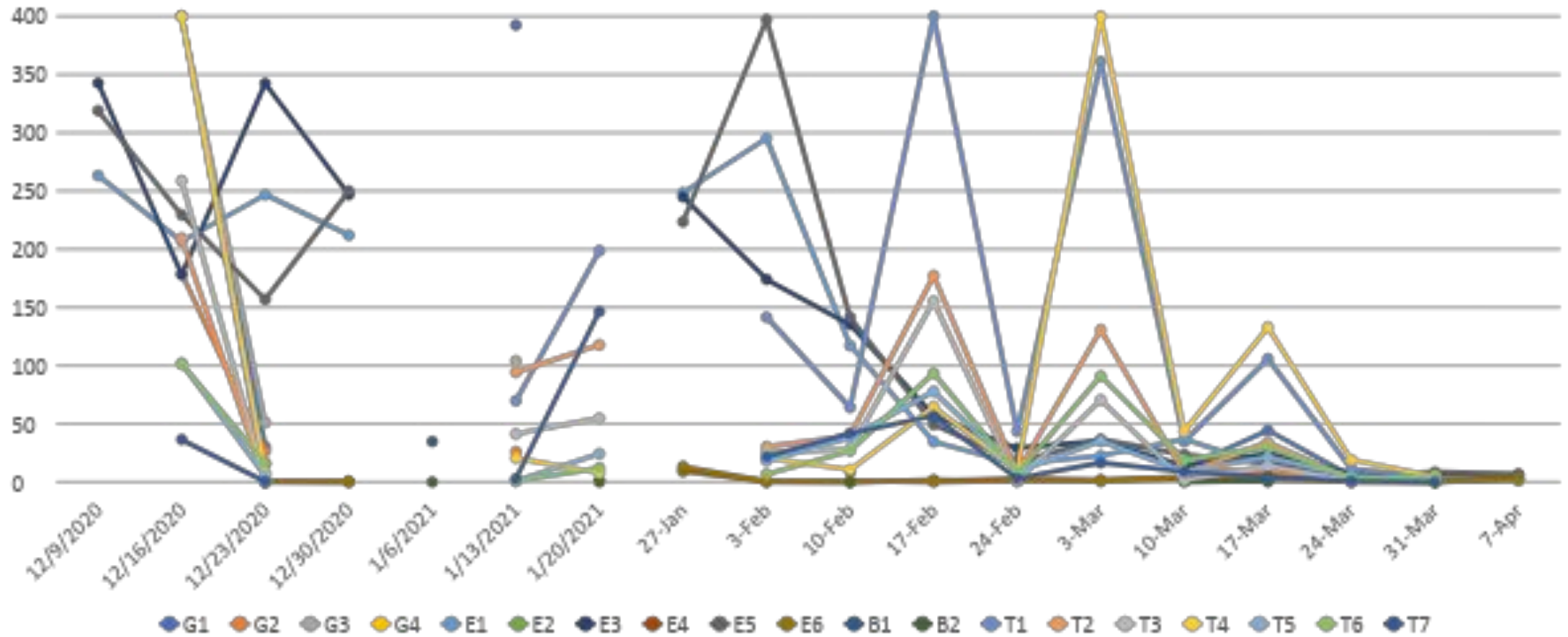


Sample week

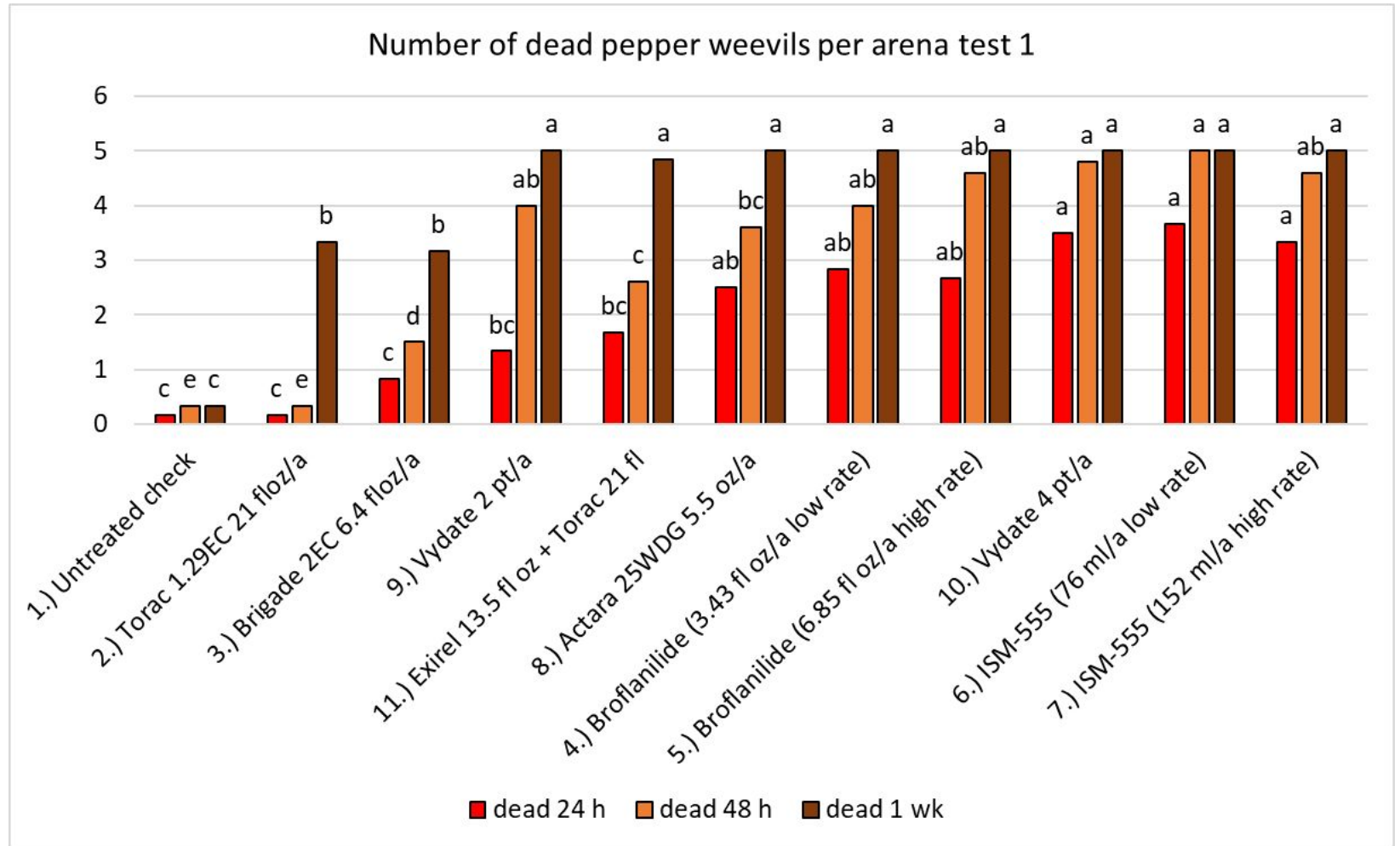
Pepper Weevil Pheromone Comparison, 2021



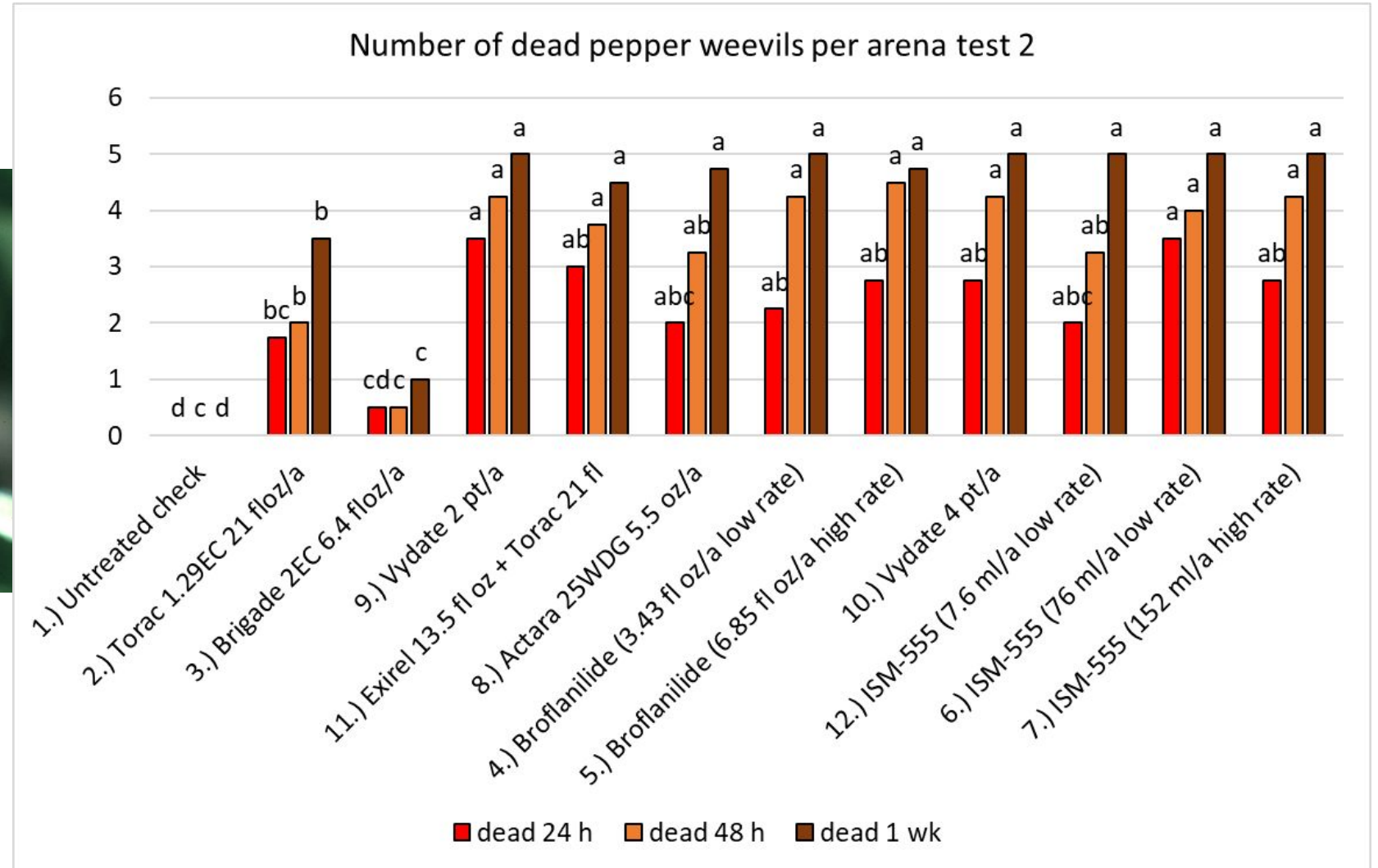
Pepper weevil traps, 2020-21



Pepper weevil Bioassay # 1



Pepper weevil Bioassay # 2



Pepper weevil management

- Destroy old fields (remove food sources)
- Spray fields now???
- **Treat each field at first bloom (one or two applications)**
- Monitor closely (requires a lot of time)
- **If weevil present (or treating preventively), maximum 5 day schedule**
- Destroy fields when weevils are not being managed

Broad mite - Types of mites

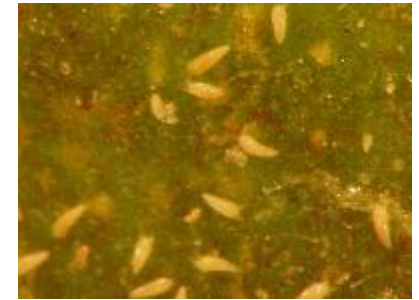
Tetranychidae



Tarsonemidae



Eriophyidae



Broad Mite

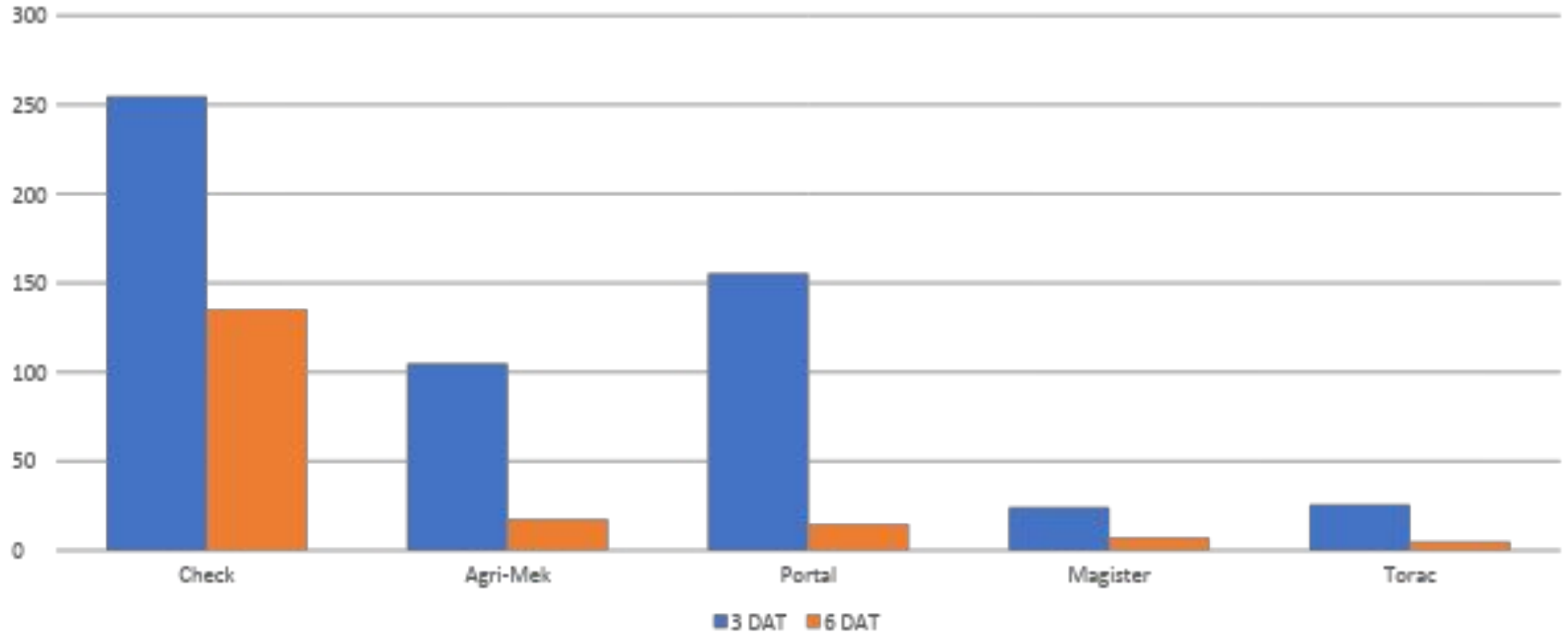
- Very small, look for eggs
- Very wide host range
- Like warm, moist conditions (Fall)
- Primarily problem on pepper and eggplant
- Damage appears similar to virus
- Damage appears about 2 weeks after infestation and up to 2 weeks after control



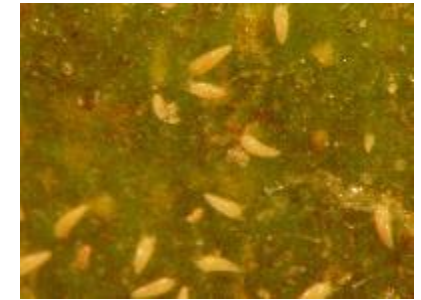
Broad mite



Broad Mites per 5 terminals



Types of mites – control considerations



Acaricides in vegetables

- Group 6: **Agri-Mek**, all types, translaminar, penetrating surfactant, ~~Bravo~~
- Unknown: Acramite, TS, contact
- Group 20B: Kanemite, TS, contact
- Group 21A: **Portal**, **Magister**, all types, contact; **Torac**, BM, contact
- Group 23: **Oberon**, all types, slow - use preventively
- Group 10B: Zeal, TS, contact, immature stages only

- **Use strategies???**

